

FOR THE UNITED STATES OF AMERICA, I, the undersigned, do hereby certify that the following plat is a true and correct copy of the original plat as recorded in the office of the County Clerk of the County of Kenton, Kentucky, and that the same is a true and correct copy of the original plat as recorded in the office of the County Clerk of the County of Kenton, Kentucky, and that the same is a true and correct copy of the original plat as recorded in the office of the County Clerk of the County of Kenton, Kentucky.

I, Robert J. Westmoreland, P.L.S., 2931
 4203 Pine Hwy - Blue Cave, KY 40118
 PROFESSIONAL CONSULTING ENGINEERS, INC.
 ENGINEER, KENTON COUNTY, KENTUCKY 41018

STATE OF _____ COUNTY OF _____
 THE FOREGOING INSTRUMENT WAS RECORDED BEFORE ME
 THIS _____ DAY OF _____ 2007 BY

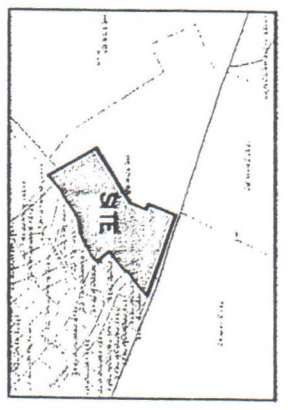
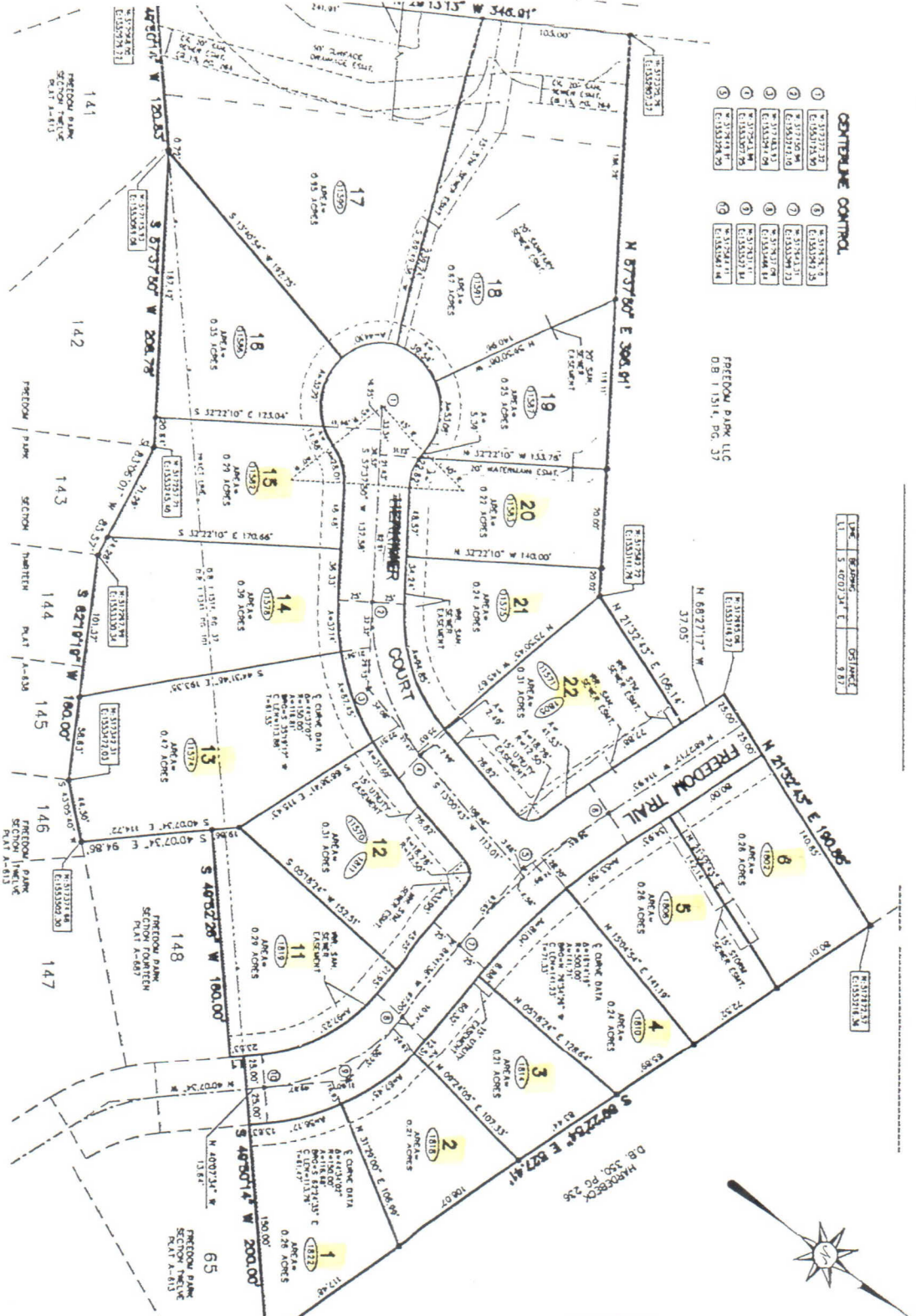
 My Notarizing Office is located at _____
 _____, _____, Kentucky.

1. I HEREBY STATE THAT THE PLAT REPRESENTS A SURVEY MADE BY ME OR SOMEONE IN MY SOLE PRACTICE AND I AM A LICENSED SURVEYOR IN THE STATE OF KENTUCKY.
 2. I CERTIFY THAT THE INFORMATION CONTAINED HEREIN IS TRUE AND CORRECT TO THE BEST OF MY KNOWLEDGE AND BELIEF.
 3. I CERTIFY THAT THE INFORMATION CONTAINED HEREIN IS BASED ON A REASONABLE INVESTIGATION AND I HAVE NOT BEEN ASSISTED FOR THIS PURPOSE BY ANY OTHER PERSON.
 4. I CERTIFY THAT THE INFORMATION CONTAINED HEREIN IS BASED ON A REASONABLE INVESTIGATION AND I HAVE NOT BEEN ASSISTED FOR THIS PURPOSE BY ANY OTHER PERSON.

CENTRELINE CONTROL

1	2	3	4	5	6	7	8	9	10
E 153520.23	E 153520.23	E 153520.23	E 153520.23	E 153520.23	E 153520.23	E 153520.23	E 153520.23	E 153520.23	E 153520.23
E 153520.23	E 153520.23	E 153520.23	E 153520.23	E 153520.23	E 153520.23	E 153520.23	E 153520.23	E 153520.23	E 153520.23
E 153520.23	E 153520.23	E 153520.23	E 153520.23	E 153520.23	E 153520.23	E 153520.23	E 153520.23	E 153520.23	E 153520.23
E 153520.23	E 153520.23	E 153520.23	E 153520.23	E 153520.23	E 153520.23	E 153520.23	E 153520.23	E 153520.23	E 153520.23

FREEDOM PARK LLC
 DB I 1314, PG 37



TOTAL AREA: 7,200 ACRES

- SET #9 REBAR 18" LONG W/CAP STAIRED: LPS2930
- FOUND REBAR
- △ FOUND CUT NOTCH
- ▲ SET UAG NAIL
- FOUND UAG NAIL
- XXXXX HOUSE NUMBER

SECTION "A"
FREEDOM PARK II
 INDEPENDENCE
 KENTON COUNTY, KENTUCKY

DEVELOPER
 FREEDOM PARK LLC
 541 BUTTERMILK PIKE SUITE 500
 CRESCENT SPRINGS, KENTUCKY

ENGINEER
ECE Engineering
 4203 Pine Hwy - Blue Cave, KY 40118

AUGUST 2007 SCALE: 1" = 50'
 SHEET 1 OF 1

1. I HEREBY CERTIFY THAT THE INFORMATION CONTAINED HEREIN IS TRUE AND CORRECT TO THE BEST OF MY KNOWLEDGE AND BELIEF.
 2. I CERTIFY THAT THE INFORMATION CONTAINED HEREIN IS BASED ON A REASONABLE INVESTIGATION AND I HAVE NOT BEEN ASSISTED FOR THIS PURPOSE BY ANY OTHER PERSON.

1. I HEREBY CERTIFY THAT THE INFORMATION CONTAINED HEREIN IS TRUE AND CORRECT TO THE BEST OF MY KNOWLEDGE AND BELIEF.
 2. I CERTIFY THAT THE INFORMATION CONTAINED HEREIN IS BASED ON A REASONABLE INVESTIGATION AND I HAVE NOT BEEN ASSISTED FOR THIS PURPOSE BY ANY OTHER PERSON.

1. I HEREBY CERTIFY THAT THE INFORMATION CONTAINED HEREIN IS TRUE AND CORRECT TO THE BEST OF MY KNOWLEDGE AND BELIEF.
 2. I CERTIFY THAT THE INFORMATION CONTAINED HEREIN IS BASED ON A REASONABLE INVESTIGATION AND I HAVE NOT BEEN ASSISTED FOR THIS PURPOSE BY ANY OTHER PERSON.

