

170

11561

171

11557

172

11553

173

11552

175

11560

174

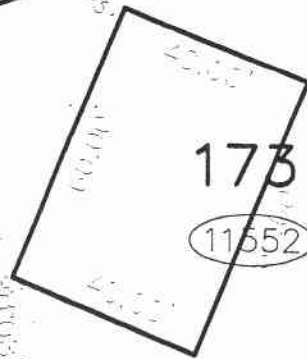
11556

125.00'
N 55°03'20"

N: 515588.16
E: 1556390.13

N: 515819.13
E: 1556371.31

N: 515881.17
E: 1556365.51



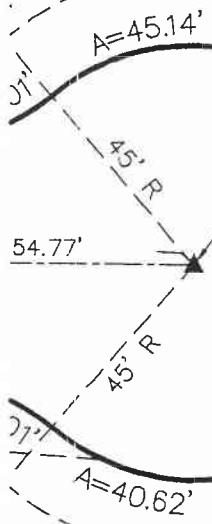
DAVID R. MILLWARD
PAMELA J. MILLWARD
D.B. 423, P. 41

ROBIN E. ROBE
CHARLES E
D.B. 640,

PERMANENT
DRAINAGE EASEMENT
PARCEL #700
TRACT B
I-1046, P. 153

COMMONWEALTH OF KY
DEPT. OF TRANSPORTATION
I-1046, P. 153

-0.23'



S:\195023\1phase 7\PLATS\SECT 16\SECT16-R.dwg, 4/6/2006 11:20:27 AM

S 72°24'34" E 135.49'

TEMP K.D.O.T. CONST.
I-1046, P. 153

S 02°11'54" W 263.17'

N 86°42'44" E 269.35'

N 01°55'32" W 235.92'

N 01°55'32" W 150.00'

N 05°20'34" W 62.31'

91.1

82.93'

94.79'

171.58'

269.35'

COMI
DE